

JOYZO

Field Control Plug-in

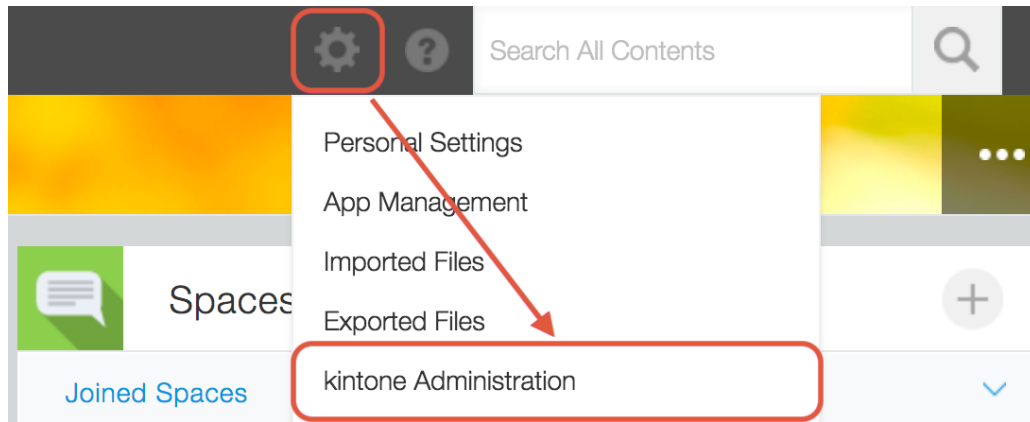
Setup Guide



kintone

SETUP GUIDE

1. Click the gear icon in the top right corner of the screen. Click "kintone Administration".



2. From the "kintone Administration" page, choose "Plug-ins" from the "Other" category.

kintone Administration

Apps

- [App Management](#)
- [App Templates](#)

Spaces

- [Space Management](#)
- [Space Templates](#)
- [Action Management](#)

Guests

- [Guest Management](#)
- [Guest Authentication](#)

Permissions

- [Permission Management](#)
- [App Groups](#)

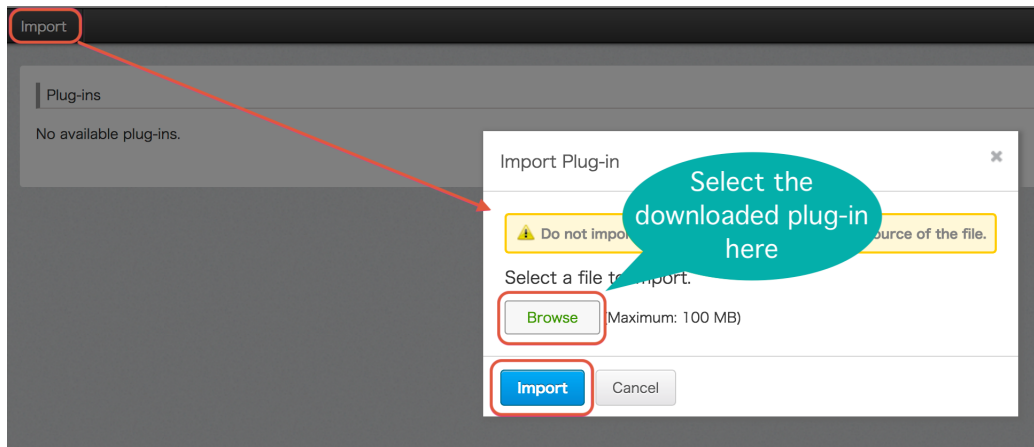
Customization

- [JavaScript and CSS Customization](#)
- [Header Color](#)

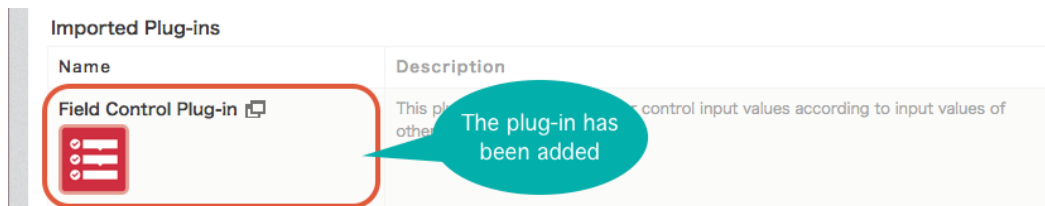
Other

- [Feature Activation](#)
- [Plug-ins](#)
- [Default View for Mobile Browsers](#)

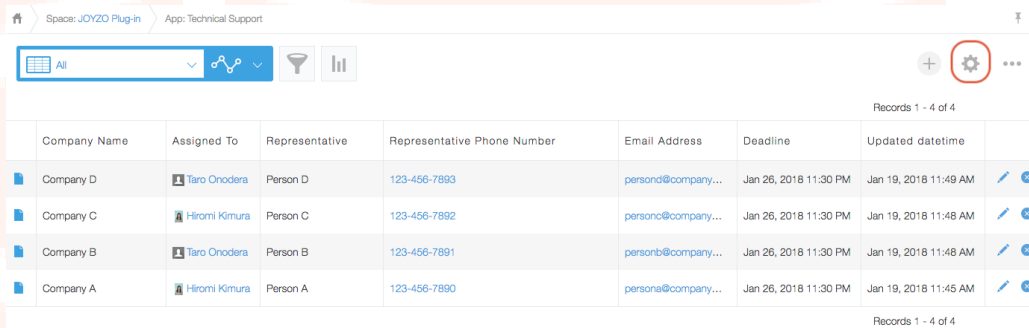
3. From the "Plug-ins" screen, click "Import", and then load the plug-in file.



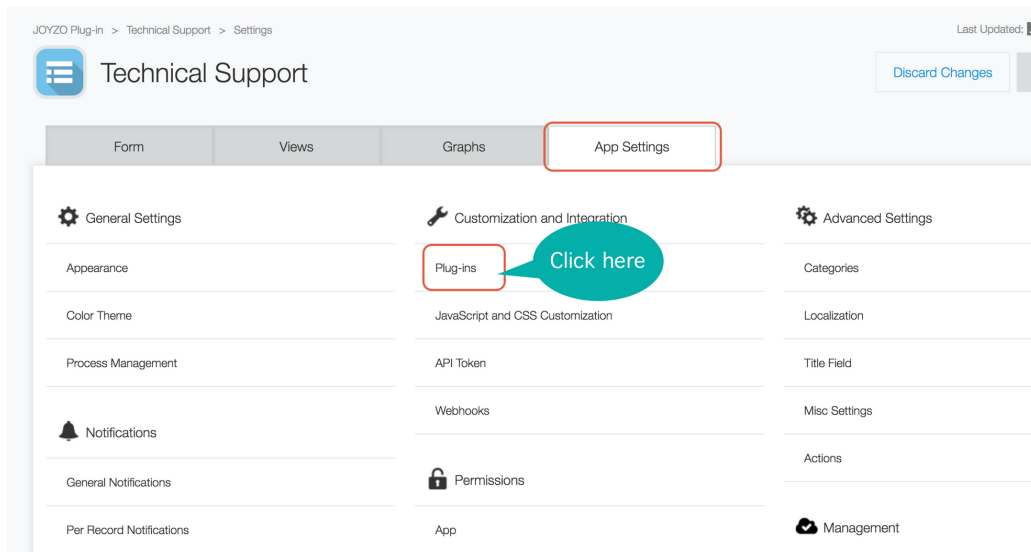
4. The Field Control Plug-in will be added to the imported plug-ins list.



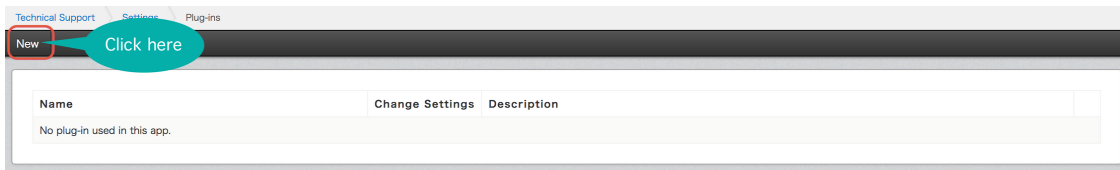
5. Click the gear icon of the application that you'd like to set up the plug-in.



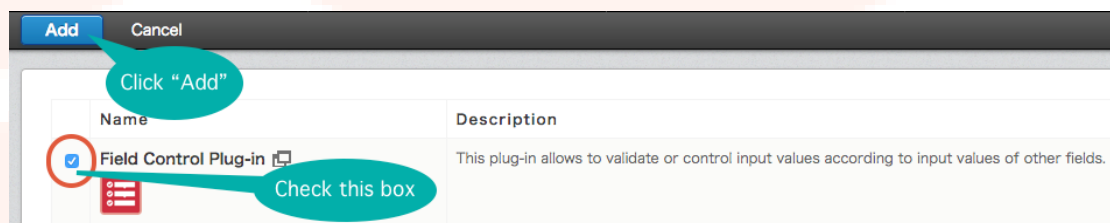
6. From the "App Settings" tab, click "Plug-ins".



7. Click "New" in the top left corner.



8. Check the Field Control Plug-in and then click "Add".



9. Click on the gear icon under "Change Settings" to enter the plug-in settings page.



10. Enter in the license key, and then arrange the target fields to be conditionally formatted as well as the conditions that must be present. Pressing the [+] button will allow more conditions to be added. Note that only fields already added to your form will be displayed in the dropdown boxes, and process management will need to be enabled to show "Status" as an option.

Plug-in Status

Active Inactive

License Key*

Setting field control items and conditions

Target Field* Action*

Problem Details Required

Conditions Product contains tablet

* The action will be executed, if all conditions are met.

Target Field* Action*

Product Required

Product contains Laptop

* The action will be executed, if all conditions are met.

Target Field* Action*

Completion Date Disabled(Clear value)

Target Field* Action*

Completion Date Required

Conditions Status includes any of Complete

* The action will be executed, if all conditions are met.

Cancel Save

Callouts:

- Set whether the plug-in is active or inactive
- Enter in the license key
- Select the field that you'd like to affect, and the action that you'd like to be implemented
- Set up the conditions that must be met before the action is implemented to the target field
- Make sure to save the settings

11. Once the plug-in setup has been completed, don't forget to update the app.

JOYZO Plug-in > Technical Support > Settings

Last Updated: Niki W 2:40 PM

Discard Changes Update App

Form Views Graphs App Settings

General Settings Customization and Integration Advanced Settings

Appearance Plug-ins Categories

Callout: Don't forget to click here to make sure the changes are shown

NOTES

Types of actions available for a target field will differ depending on the type of target field.

Radio Button:

Target Field* **Action***

Completion Status Disabled

May only be disabled

Single-line Text / Number / Dropdown / Date:

Target Field* **Action***

Representative Required

Conditions All Records Disabled

Disabled(Clear value)

Choose from "Required", "Disabled", or "Disabled (Clear Value)"

* The action will be executed, if all conditions are met.